



ZENTRO[®] FIRE PIT

CATALOG

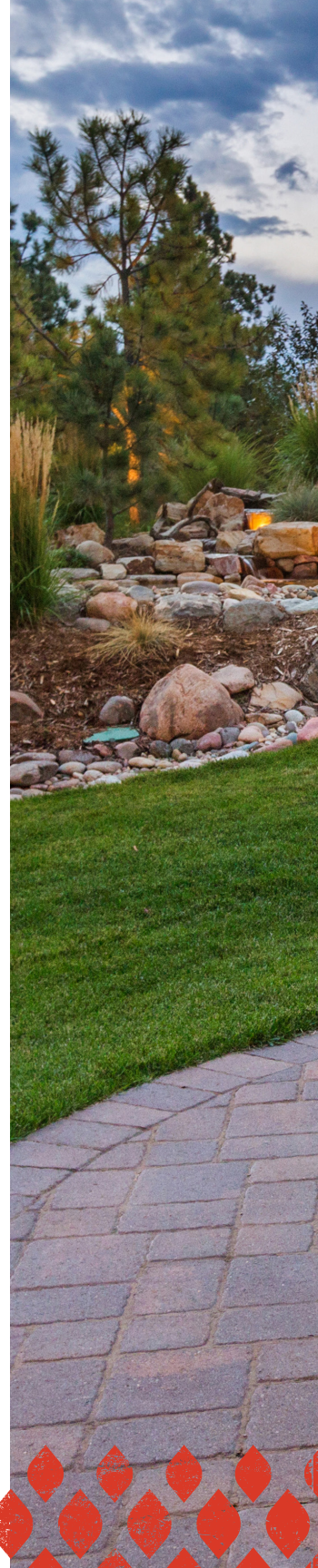
 **BREEO[®]**



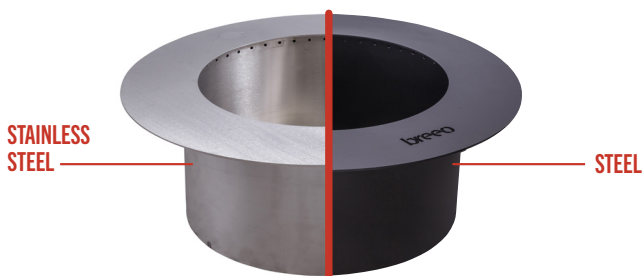


ZENTRO

Designed for the patio enthusiast, our Zentro® smokeless fire pits are designed to accommodate any type of block, stone, or concrete backyard fire pit surround. We offer two sizes and shapes that fit almost any size fire pit surround. Installation time needed to turn your smoky block fire pit into an efficiently burning and beautiful centerpiece is less than a minute. No assembly is required, simply dropped your Zentro fire pit into the top of your surround. Attach any of the optional add-on Breeo® grilling accessories to your Zentro fire pit and cook an epic meal, then remove, and settle in for a long evening of relaxing around your smokeless fire!



ZENTRO ROUND



24" 24" ROUND

SMOKELESS FIRE PIT INSERT WITH LID
Z0-24SLFP-SS • Z0-24SLFP
\$749.00

BLOCK FIRE PIT THAT IT FITS: 27-33 in.

- **Inside Diameter:** 24 in.
- **Top Flange Outside Diameter:** 35 in.
- **Height:** 12 in.
- **Weight (Steel):** 104 lbs.
- **Weight (Stainless Steel):** 77 lbs.

30" 30" ROUND

SMOKELESS FIRE PIT INSERT WITH LID
Z0-30SLFP-SS • Z0-30SLFP
\$1799.00 \$999.00

BLOCK FIRE PIT THAT IT FITS: 34-39 in.

- **Inside Diameter:** 30 in.
- **Top Flange Outside Diameter:** 41 in.
- **Height:** 12 in.
- **Weight (Steel):** 130 lbs.
- **Weight (Stainless Steel):** 135 lbs.









ZENTRO SQUARE

STAINLESS
STEEL



STEEL

24" SQUARE
SMOKELESS FIRE PIT INSERT WITH LID
ZO-24SLFP-SQ-SS • ZO-24SLFP-SQ
\$1599.00 \$899.00

BLOCK FIRE PIT THAT IT FITS: 27-33 in.

- Inside Diameter: 24 x 24 in.
- Top Flange Outside Diameter: 35 x 35 in.
- Height: 12 in.
- Weight (Steel): 113 lbs.
- Weight (Stainless Steel): 106 lbs.

ZENTRO ADD ONS

◆ **OUTPOST™ GRILL**

WITH CARRYING BAG

BR-OP24 \$200.00

The Outpost™ adjustable grill is designed to go where ever you roam. Our versatile Anchorpoint™ post-locking system makes securing in the ground—or in your Breeo fire pit—simple and stable. The Outpost grill sets up in seconds, breaks down just as quickly, and stores in its heavy-duty soft case, keeping soot and grease away from the rest of your gear.



◆ **KETTLE HOOK**

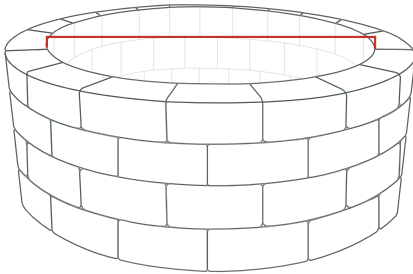
CAST IRON KETTLES AVAILABLE

BR-KH24 \$100.00

The Kettle Hook was designed with functionality in mind. Adjusting up & down, and side to side using our grill post system, the Kettle Hook gives you ultimate cooking flexibility. Used in conjunction with the Outpost or by itself, the Kettle Hook allows you to cook using Dutch ovens or pots. It even allows you to cook big, heavy pieces of meat such as Leg of Lamb! The ultimate addition to your fire cooking collection, the Kettle Hook will turn some heads at your next outdoor cookout!



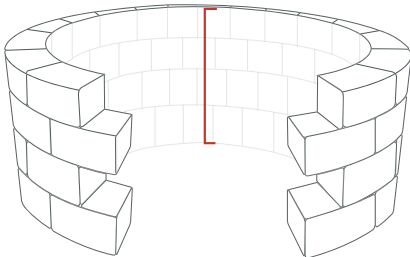
INSTALLATION IN 3 EASY STEPS



STEP 1

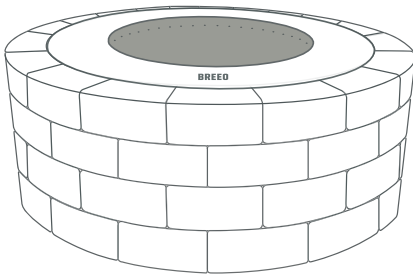
Ensure that you have the correct size block fire surround for your new Zentro® smokeless fire pit (see table below).

ZENTRO SIZE:	BLOCK SURROUND NEEDED:
ZENTRO 24"	27" - 33" INSIDE DIAMETER
ZENTRO 30"	34" - 39" INSIDE DIAMETER



STEP 2

Ensure that the depth of your block fire surround is at least 15 inches; this will provide 3 inches of air space underneath the fire pit insert for air flow. Ensure that nothing is touching the bottom or the sides of your Zentro fire pit as this will affect airflow and interfere with the smoke reduction technology. Remove any debris or ashes from the inside of the block fire surround if necessary.



STEP 3

Using 2-3 people, set the fire pit into the block fire surround. The Zentro fire pit has 1/8" spacer brackets welded to the underside of the top flange. Your Zentro fire pit Insert is positioned correctly when these spacer brackets are resting on the top layer of the block fire surround.

HOW TO BUILD A BETTER FIRE



STEP 1

Prepare your fuel. Paper, cardboard, pine needles, and dryer lint all make great starter materials. You'll also want a good supply of dry kindling and split hardwood.



STEP 2

Build a base of starter material in the center of your fire pit. Add a layer of kindling and a match. No need for lighter fluid. Just like your grandad did it.



STEP 3

Take things one log at a time. After the fire takes, slowly feed it more kindling. Once you've got that good and going, it's time for your split hardwood.



STEP 4

Don't add logs haphazardly. Building tipi, lean-to, or log-cabin style means better airflow for your fire. Remember, the blaze needs to breathe.



STEP 5

As your fire burns, keep it evenly spread throughout the fire pit.

BREEO TIP

Arranging a few embers directly against the inner wall of your Breeo keeps smoke at bay.



FOR YOUR SAFETY

The Zentro® smokeless fire pit is designed for outdoor use only. **Never burn your Zentro fire pit in a building, garage, or any enclosed area.**

Always use your Zentro fire pit on a level, non-combustible surface such as rock, stone or dirt. **Never use your Zentro fire pit on wooden or composite decks, stamped concrete or any heat sensitive surface.**

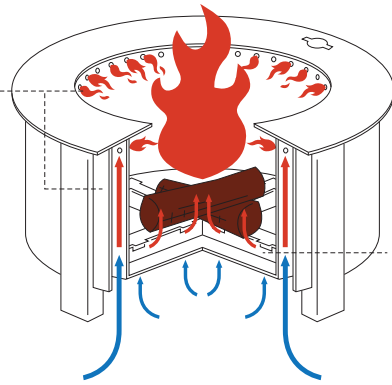
Do not attempt to move or store your Zentro fire pit until all ashes and coals are completely extinguished and all surfaces have cooled completely. Never touch ashes or coals to see if they are hot.

All surfaces of the Zentro fire pit will become extremely hot when in use. To avoid burns, do not touch any part of the Zentro fire pit until it has completely cooled unless you are using protective gear (potholders, gloves, BBQ mittens, hot pads, etc.).

When using your Zentro fire pit, exercise the same precautions you would with any open fire. **Never leave your Zentro fire pit unattended, especially around children and pets.**

DOUBLE-WALL SECONDARY COMBUSTION

Fire heats walls and hot air rises through the gap between the two walls. The air then exits through holes around the rim, which mixes with the smoke and causes it to reburn.



X AIRFLOW™

Raised air vents off the bottom of the fire pit enables oxygen to come in even after significant ash build up.

PROPER BURN TECHNIQUES

The Zentro® smokeless fire pit utilizes a double-wall, secondary combustion design to reduce smoke during use. **When the fire is burning, the walls of the fire pit heat up and hot air rises through the gap between the two walls. The air exits the wall cavity through the line of holes around the inside rim. This pressurized, heated oxygen mixes with the smoke and causes it to reburn. Use the following tips to maximize the smoke reduction of your Zentro® fire pit.**

Only burn dry, well-seasoned hardwoods such as maple, oak, hickory, cherry, and birch. This ensures a hot, steady burn, which helps your Zentro fire pit reduce smoke. Wet, green, or soft wood (like pine or cedar) will produce more smoke.

For maximum smoke reduction, both the bottom and side walls need to be as hot as possible. The hotter the walls become, the more air is forced through the rim, burning away smoke before it leaves the fire pit. So, keep your fire burning as hot as possible. Keep hot coals directly against the inside wall of the fire pit. And never use a grate in the bottom of your Zentro fire pit: a grate keeps logs off the bottom of your fire pit, not allowing the bottom to attain the heat needed for smoke reduction.

At the start of your fire, allow about 15 minutes for smoke to dissipate as the fire pit's walls heat up. Adding logs to your fire causes the fire to temporarily burn cooler, so add new logs one at a time to avoid an increase of smoke.

To extinguish the fire, simply allow it to go out on its own if possible. However, if extinguishing can't wait, use a minimal amount of water to douse the flames. Excess water sitting on the bottom of the fire pit can cause rusting, so use just enough water to put out the fire.

Because of the X Airflow™ system incorporated in your Zentro fire pit, expect to clean out your fire pit after 3–6 burns, or once the ash has reached the holes in the X Airflow™ base. Wait until your Zentro fire pit has cooled completely, then use a Breco® Ash Removal Tool or small hearth shovel to scoop out the ashes.

TENDING TO YOUR ZENTRO® FIRE PIT

STEEL

Be sure to burn a hot fire in your fire pit within 24-48 hours of having your fire pit outside. This will help to cure the paint on the top and outside of the fire pit.

This product can reach potential temperatures of 1,900+ degrees Fahrenheit. At this point, there is no paint that can withstand both direct flame contact and outdoor use. We paint our fire pits with a High-Temp outdoor grill paint that has a heating rating up to 1,400 degrees Fahrenheit. However, with use and time, the fire pit will begin to develop surface rust in some areas. For this reason, we build our fire pits very heavy duty so they will last for years and years, despite the rust. You can maintain the painted black look of your fire pit by sanding down any spots you would like to paint and then using a can of black high-temperature paint to touch-up the spots.

STAINLESS STEEL

The Zentro stainless steel smokeless fire pits are built out of a high quality 304 stainless steel, which should never rust, allowing you leave your fire pit out in the elements all year long! This material will naturally develop a beautiful patina finish over time and requires no maintenance.

Breeo, LLC warrants to the original purchaser that the Breeo Fire Pits and Accessories are free from workmanship and material defects during the lifetime of the original purchaser. In addition Breeo, LLC warrants no rust through or burn through for a period of five (5) years from purchase. If a product is covered by this limited warranty, Breeo, LLC, at its option, will repair or replace with a new product free of charge, excluding any applicable shipping and handling charges. If the product being warranted has been discontinued, the replacement product will be of equal or similar value. Altering any Breeo product, or using the product in any way other than the intended use, will void this Lifetime Warranty. Except as provided above, no warranty is offered on rust, paint or finishes due to being made with material with potential for corrosion. Steel products will develop a natural iron oxide patina over time.

Breeo, LLC's liability and obligation is limited to repair or replacement of the product, at their option. The purchaser must provide Breeo, LLC with photos of the product's defects for evaluation. Upon approval of warranty, Breeo, LLC will issue a return for repair, or return for exchange of the defective product.

This warranty does not cover damage or product failure caused by normal wear and tear, accident, misuse, negligence, tampering, modifications, act of war, overloading, improper attachment, improper maintenance, or failure to maintain. Breeo, LLC is held harmless for any injury or death caused by the misuse of this product. This warranty does not cover damage caused by proper or improper use of our products to any surrounding surfaces, structures, or furnishings. This includes, but is not limited to, discoloration or damage to a patio or deck surface, furniture, house, or any other structure.

This warranty gives you specific legal rights providing said product is put to its proper designated use.

THIS WARRANTY IS EXPRESSLY IN LIEU OF ALL OTHER WARRANTIES, EXPRESS OR IMPLIED, INCLUDING THE WARRANTY OF MERCHANTABILITY AND FITNESS FOR A PARTICULAR PURPOSE. NO ORAL AGREEMENT, GUARANTEE, PROMISE, REPRESENTATION OR WARRANTY SHALL BE BINDING. IN NO EVENT WILL BREEO, LLC BE LIABLE FOR ANY SPECIAL, INDIRECT, INCIDENTAL OR CONSEQUENTIAL DAMAGES EVEN IF BREEO, LLC HAS BEEN ADVISED OF THE POSSIBILITY OF SUCH DAMAGES AND EVEN IF BREEO, LLC HAS KNOWLEDGE THAT FAILURE TO PERFORM COULD CAUSE CONSEQUENTIAL ECONOMIC LOSSES. IN ANY EVENT, CUMULATIVE DAMAGES FOR BREACH OF THIS WARRANTY WILL BE LIMITED TO THE AMOUNT ACTUALLY PAID TO BREEO, LLC FOR THE PRODUCT. THIS PARAGRAPH SHALL APPLY TO ALL ACTIONS RELATED TO THE PRODUCT, WHETHER BASED ON TORT, CONTRACT OR OTHER THEORIES. THE PURCHASER ACKNOWLEDGES THAT THIS PARAGRAPH ALLOCATES THE RISK OF PRODUCT FAILURE BETWEEN BREEO, LLC AND THE PURCHASER, AND THAT THIS ALLOCATION IS REFLECTED IN THE PRICE PAID.



WWW.BREEO.CO

(800) 413-9848

CONTACT@BREEOLLC.COM

